



Adjuster 2x4

DX□-1E

Instruction Manual

This product is mounted on commercially available 2x4 lumber (1 1/2 x 3 1/2 inches or 38 x 89mm) and can be installed between the floor and ceiling by tension force without using screws or nails.

This product can be used by combining with parts of the Labrico series. Please cut a piece of 2x4 lumber to a height that is 3.8 inches (95 mm) shorter than the ceiling height to install the product. (Do not use lumber that is bent or warped.) Maximum ceiling height for installation is 108.3 inches (2750 mm).



WARNING

To ensure safe and proper use of the product, read these instructions before use. Failure to follow these precautions and instructions could result in serious injury and/or property damage. Keep this manual nearby so that it can be referred to anytime during installation or use of the product. Instructions are also available on our company website at <https://heianshindo.com>.



1

- slope, curved or uneven surface.
- Install the lumber perpendicular to the floor. Do not install the lumber at an angle.
- Install vertically (between ceiling and floor) and not horizontally.
- Install the upper cap on the ceiling side of the 2x4 lumber.
- Do not use the product in areas subject to high temperatures, direct sunlight, high humidity or direct contact with water, or outdoors or in bathrooms.
- Use the product within the indicated working load capacity shown below.
- When hanging things on the lumber, apply a load that is evenly distributed.
- Avoid applying shock loads to lumber such as pulling it down strongly, shaking it, climbing up or hanging from it.
- Do not hang a TV or bicycle on the product.
- Discontinue use immediately if any damage or abnormalities are found.
- Check the installation condition of the product a few days after each installation and

4

increase the tension force by turning the adjusting screw if the tension force is not enough. As the tension force could loosen when used for a long period of time, check the tension regularly (around once per week) and turn the adjusting screw to increase the tension force in case it has loosened.

- Do not store valuable, breakable or hazardous objects on the lumber.
- Deodorants, air fresheners, cosmetics, hairdressing liquids, acid detergents, alkaline detergents, oils and organic solvents (benzene, thinner, etc.) can deteriorate the product. In case of contact, immediately clean the product and remove these substances.

5

Precautions to Prevent Injury or Damage

- Failure to obey these precautions may cause the product to fall down or catch on fire, leading to serious injury and/or property damage.
- Do not use this product to protect an individual or their property such as for use as a handrail or guard. Do not attach anything to the product that will produce vibration or shock such as a door on the lumber. Do not use this product for any purpose other than the intended use described in these instructions. Doing so could result in the product falling, leading to injury and/or physical damage.
- Do not install this product above or near hazardous material such as chemicals, cutting tools or other items that could cause injury, combustion equipment or heating equipment. Things hung on the lumber may catch fire or may fall and cause injury.
- Keep children away from the product while

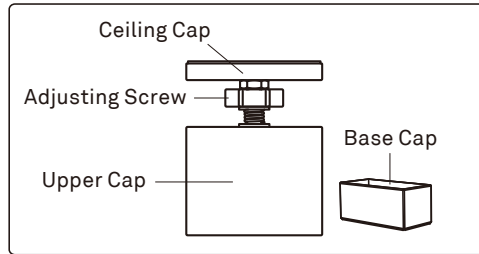
2

assembling or installing it. This is to avoid accidental ingestion of small parts, and injuries resulting from tripping on a component.

- Do not modify or paint the product. Doing so could cause the product fall down and cause injury.
- When installing and using the product, observe the following:
 - Install the product where the concrete ceiling and floor or their material and foundations are strong enough to withstand pressure produced by the product during the entire period of use. Do not install on weak ceilings or floors such as those made of wall board or veneer.
 - Do not install this product on carpet, straw mat, fragile surface or unfixed desk or table.
 - This product is only for indoor use. Do not use this product outside.
 - The contact surface should be larger than the surface of the product (upper cap and base cap).
 - The product should not be installed on a

3

Parts Description



Location for Installation

✓ OK	Where the concrete ceiling, floor and their walls and foundations are strong enough to withstand pressure.
✗ NOT OK	On a slope, curved or uneven surface. On carpet, straw mat, fragile surface and unfixed desk or table.

Maximum ceiling height for installation :
Up to 108.3 inches (2750mm)
Maximum working load (reference values) :
Up to 44 lbs (20 kg) for each 2x4 pillar.

6

Working Load

The working load must not exceed 44 lbs (20 kg) for each 2x4 pillar. Otherwise, it may fall over. (The working load includes the weight of the shelf plate itself, if it is being used.)

The working load capacity may decrease because of installation location, the wood to be used and installation condition. As a result, the indicated working load capacity is not a guaranteed value but is shown here for reference only.

7

Installation Procedures

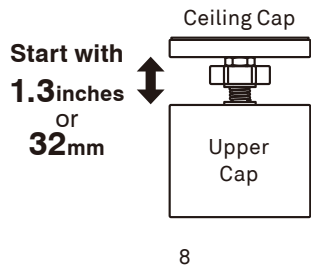
01

Check the condition of the ceiling and floor on which the product will be mounted.

- Follow above safety precautions during installation.

02

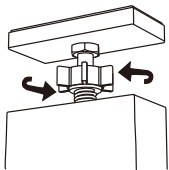
Before installing the product, set the gap between the ceiling cap and the upper cap to the minimum (1.3 inches / 32 mm).



06

Rotate the adjusting screw clockwise to extend the ceiling cap to the ceiling and this product will be tightly fixed by tension.

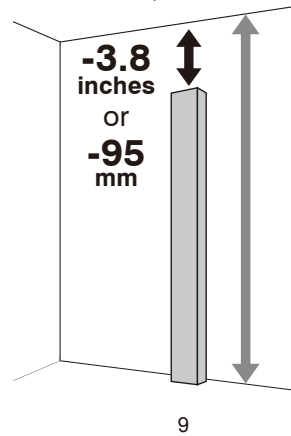
So as to not damage the ceiling, slowly turn the adjusting screw while checking the ceiling to be sure it is not damaged.



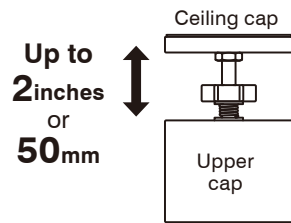
03

Measure the ceiling height. Cut the 2x4 lumber(*) to a height that is 3.8 inches (95 mm) shorter than the ceiling height.

- *Use commercially available 2x4 lumber (1 1/2 x 3 1/2 inches or 38 x 89 mm)

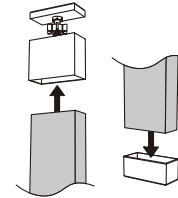


•If the gap between the ceiling cap and the upper cap exceeds 2 inches (50mm), recheck the ceiling height and the lumber length. Then adjust the lumber length and start over from step 01.



04

Insert the cap with the adjusting screw on the top of the 2x4 lumber and insert the base cap on the bottom of the 2x4 lumber.



- Do not turn the upper cap upside down before installation, etc. as this could result in parts falling off the product.

- Install the upper cap at the top and the bottom cap at the bottom of the pillar. Failure to do so could result in the product falling down.

07

Before use, push and pull the lumber lightly to be sure it is secured in place.

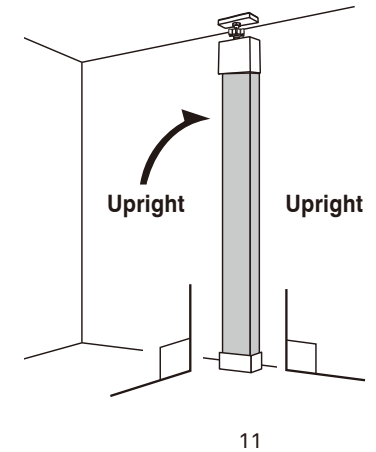
Note:

Depending on the structure and strength of the ceiling or the floor material, the ceiling or floor may deform and cause the adjuster screw to loosen. Check the tension of the product a few days after installation and increase the tension force by turning the adjuster screw if the tension force is not enough.

As the tension force could loosen when used for a long period of time, check the tension regularly (around once per week) and turn the adjusting screw to increase the tension force in case it has loosened.

05

Place the 2x4 lumber where the products will be installed and ensure that it is upright.



Material Indication

Resin parts	ABS Resin, Synthetic Rubber
Screws	Steel (Plating)
Spring	Spring steel (Plating)

MADE IN CHINA DESIGNED IN JAPAN M231228

© We will not compensate for failures, damage, and injuries due to things such as natural disasters, deterioration, alteration, inappropriate use, or failure to follow these instructions.

* We make every effort to manufacture products to ensure that they are free of defects. However, in case you find it defective, please contact the retailer where you purchased it.

* In order to improve quality, the specifications and/or appearance are subject to change without prior notice.

* The color tone on the package is for reference and may differ from the actual color of the product.



HEIAN SHINDO KOGYO CO., LTD.
<http://www.heianshindo.com>